



MONTHLY MEMBERSHIP PROGRESS REPORT

District 27 A1

Results as of: 5/31/2016

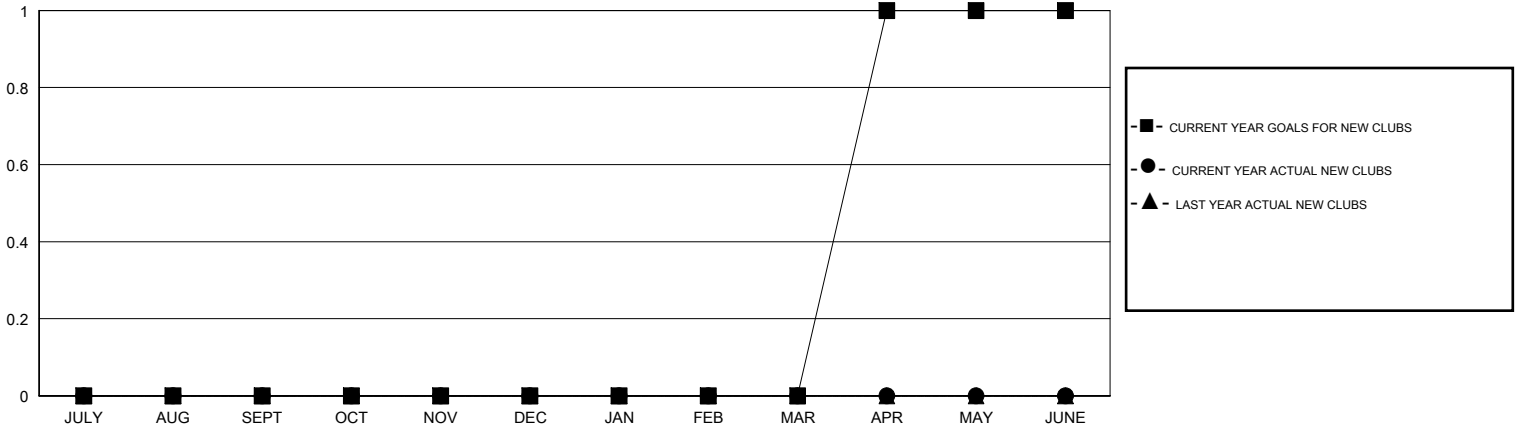
GMT: Judy Hankom

LOCATION WISCONSIN

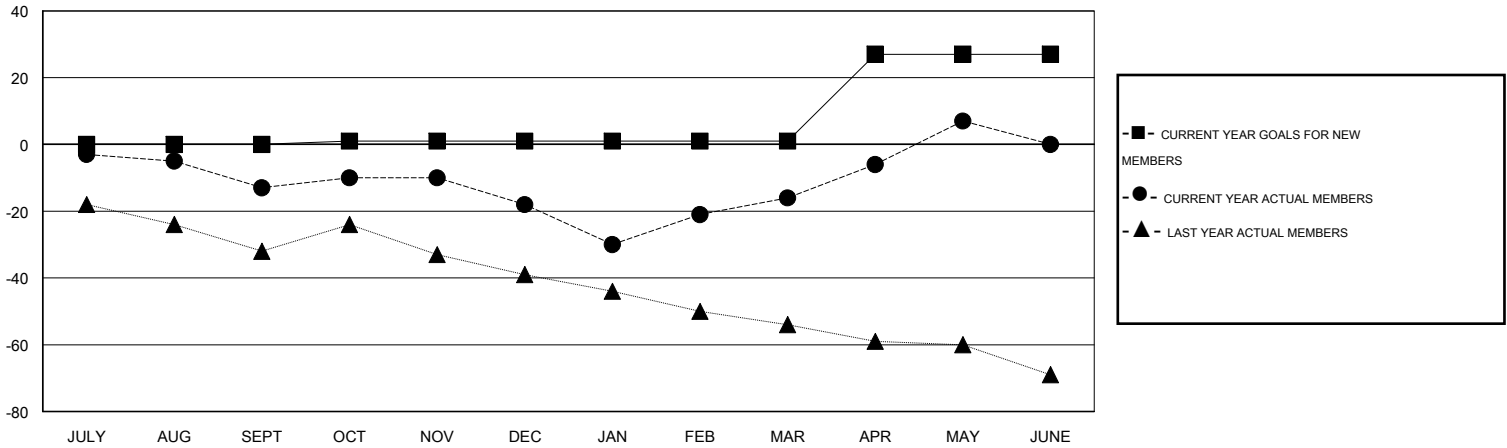
GMT CA 1

Clubs					Members				
RESULTS FOR 2015-2016					RESULTS FOR 2015-2016				
QUARTER	NEW CLUB GOAL	NEW CLUBS	DROPPED CLUBS	NET GAIN/LOSS	QUARTER	NEW MEMBER GOAL	CHARTER AND NEW MEMBERS ADDED	DROPPED MEMBERS	NET GAIN/LOSS
JULY/AUG/SEPT	0	0	0	0	JULY/AUG/SEPT	0	25	38	-13
OCT/NOV/DEC	0	0	0	0	OCT/NOV/DEC	1	36	41	-5
JAN/FEB/MAR	0	0	0	0	JAN/FEB/MAR	0	41	39	2
APR/MAY/JUNE	1	0	0	0	APR/MAY/JUNE	26	41	18	23

GOALS AND ACTUAL NEW CLUBS CUMULATIVE



GOALS AND ACTUAL MEMBERS CUMULATIVE



DROPPED CLUBS: 0	42 CLUBS OF 50 ADDED 1 OR MORE NEW MEMBERS	GENDER DISTRIBUTION
		MALE 1,435 (82.52%)
		FEMALE 304 (17.48%)
DROPPED MEMBERS	CLICK HERE FOR HEALTH ASSESSMENT DATA	FAMILY UNIT MEMBERS 244
DECEASED 16		HEAD OF HOUSEHOLD 115
CLUB CANCELLED 0		NON-HEAD OF HOUSEHOLD 129
OTHER 118		
TOTAL 134		